



Dual

2017

MARINE ENTERTAINMENT



Technology	2	Speakers and Subwoofers	12
Gauge Hole Receivers	6	Speakers	13
Receivers	7	Accessories	14
Mechless Combos	8	Camo	15
Mechless and CD Combos	9		
Amplifiers	10		
Smart EQ	11		

EASY TO USE CONNECTIVITY...



Built-in Bluetooth Wireless Technology

Dual receivers have built-in Bluetooth, allowing the user to conveniently integrate their smartphones and other portable media devices into the boat's audio system, while keeping the devices hidden and protected from possible water splashes. The technology supports the three most popular profiles: HFP, A2DP and AVRCP:

Hands-Free Calling (HFP)

Allows phone calls via the boat's audio system using most Bluetooth enabled cell phones, including the iPhone. Keep your phone safely tucked inside a watertight marine bag, and still make phone calls using the boat's audio system.

Audio Streaming and Player Control (A2DP and AVRCP)

Allow for wireless audio streaming from a portable media player to the receiver for playback through the boat's speakers. Control your media player directly from the receiver's front panel or via the receiver's remote control while keeping the device stashed away and protected from the elements.



Full Color
3" LCD

3" QVGA Full-Color LCD

These large, multi-line digital LCDs (320 x 240) feature stunning, full-color background graphics. The scrolling display shows album art, artist and song information.



Direct USB Control for iPod®/iPhone®

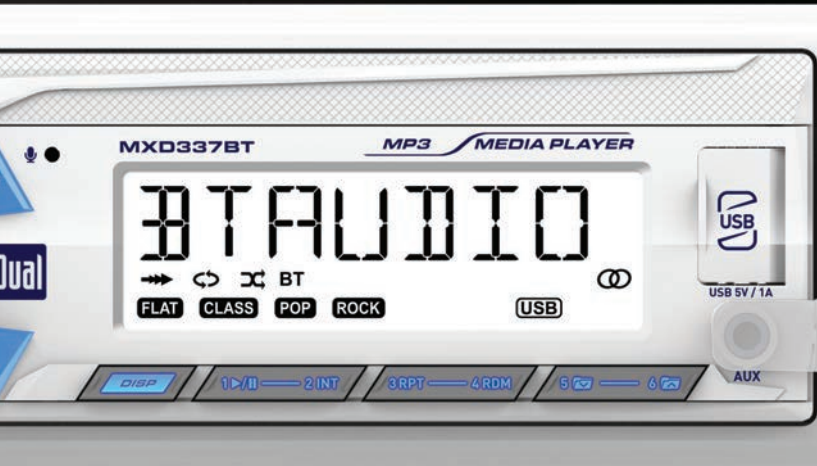
Plug in your iPod or iPhone via the USB input and control it directly from the receiver's front panel. Browse the music library, change songs, adjust volume and more, while enjoying high-quality sound from the boat's speakers. The connected device will also be charged.

... FOR ENHANCED ON-THE-WATER ENTERTAINMENT.



Control for Pandora Internet Radio App

Enjoy personalized Internet radio on your boat, directly from the receiver. Give tracks "thumbs up" or "thumbs down," bookmark a song for purchase and switch between your personalized radio stations. The receiver conveniently displays full track data. The Pandora control feature is compatible with iPhone devices connected to the receiver via USB and with Android devices connected via Bluetooth. Pandora app required (free download from the iTunes App Store).



MP3 Audio Support

Dual marine receivers are compatible with today's most popular digital audio format: MP3. Most Dual receivers support this format, allowing the user to bring their entire music collection on the boat via CD, USB thumb drive, or media player.

CD Playback Mode

Most Dual CD receivers allow playback of MP3 data CDs in addition to traditional CDs and CD-R/RWs. Know what is playing at a glance with ID3 tag display of artist and track information.

USB Playback Mode

Most Dual audio receivers feature USB inputs, allowing the user to access their music library (up to 16GB of MP3) via a USB flash drive. The USB inputs are conveniently located on the front panel of the receivers.



FEATURES



◀ IPX6 Marinized

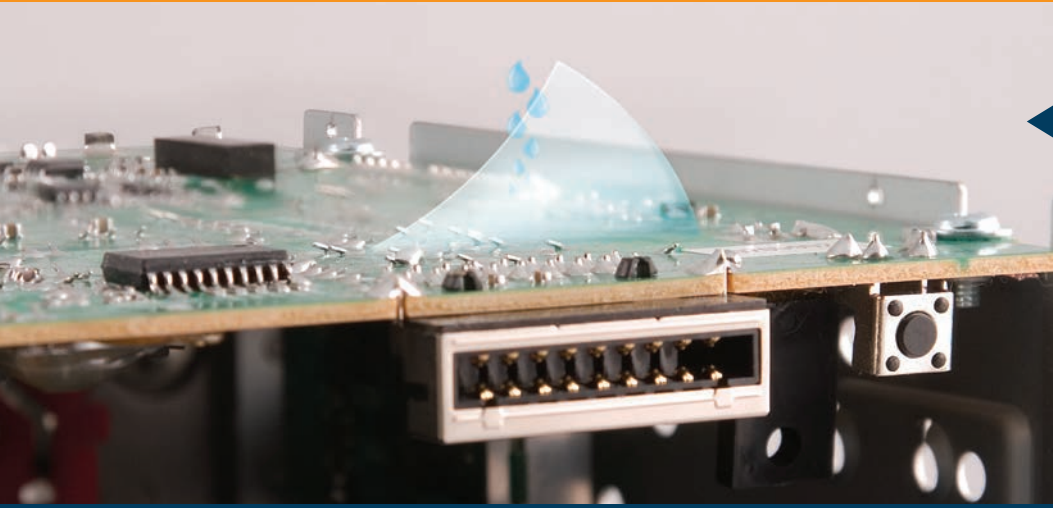
The new Dual gauge hole receivers and marine amplifiers are designed to meet the IPX6 waterproof standard. These products will not fail or allow water seepage when exposed to heavy splashing and rain, giving you peace of mind while on the water.

Nanofics® Coating ▶

The front printed circuit board (PCB) of the AM505BT includes an ultra-thin Nanofics® coating to provide permanent high-level water and oil repellency. This protects against corrosion and short-circuiting caused by humidity and water splashes, without impacting device performance.



MARINIZATION FEATURES & TECHNOLOGIES



◀ Conformal Coating

A transparent protective film is applied to surfaces of all interior printed circuit boards. This additional layer of defense guards against dust, condensation and corrosion - ensuring maximum longevity in demanding marine installations.

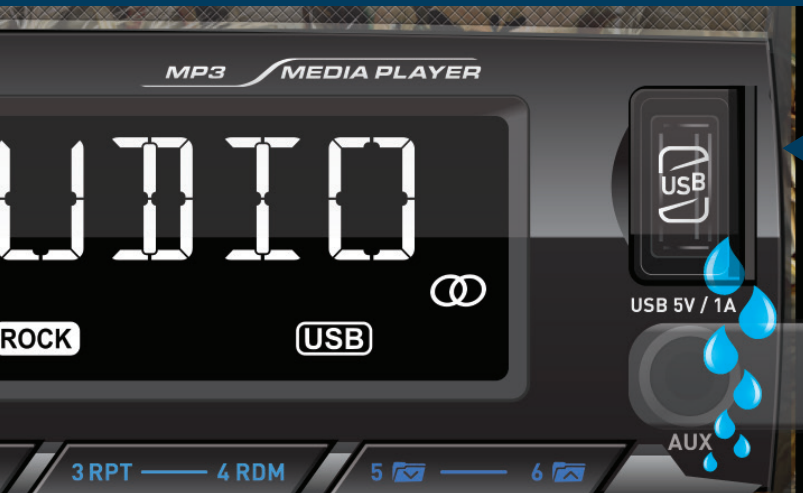
UV Resistant Construction ▶

The faceplate and other exposed elements of the receiver are carefully injection-molded using high-temperature ultraviolet resistant resins, preventing them from breaking down in the sun and giving you peace of mind to enjoy your music on the water even during the sunniest days.



PET Wrapped Chassis

This tough, dirt and moisture-resistant layer of PET (polyethylene) wraps the top and sides of the entire chassis - providing an additional measure of protection from the harsh marine elements. Keep your music in, but moisture and debris out.



Silicone Cover

Injected from high-grade silicone, these removable covers guard your receiver's front panel aux inputs, protecting it from water splashes and debris. A convenient tether provides an attachment to the receiver, ensuring the cover is removable but won't get lost at sea.

Positive LCD Display

The vibrant positive-type LCD (Liquid Crystal Display) provides enhanced visibility under the toughest boating environments. High-contrast black characters on a white background ensure readability in any situation - from total darkness to direct sunlight.



EDP Chassis

Applied using an electrical charge, EDP (Electrophoretically Deposited Paint) offers unparalleled protection against corrosion and rust resistance. All exterior metal surfaces including chassis, heatsink and mounting sleeve undergo this process to ensure long life in the marine environment.



GAUGE HOLE RECEIVERS

MECHLESS
NEW



MMC36BT

Marine Media Control Center with Smart App

This flagship model includes a 3.7" x 5.4" command controller featuring a 3" TFT full-color LCD and all function controls. The controller is IPX6 waterproof and its faceplate and trim ring are UV-resistant, making it ideal for marine applications. This control center features built-in Bluetooth connectivity for audio streaming, a 7-channel weather band tuner, and direct USB control for iPod and iPhone devices. A free app is available for both Apple and Android devices, allowing the user to conveniently control the Media Center from their smartphone via Bluetooth.

- Large 3" TFT multi-line full color LCD
- Built-in Bluetooth® (A2DP) & direct USB control for iPod®/iPhone®
- Rear camera input
- USB input (2.1A charge)
- 3 Pairs of RCA preamp outputs (F/R/S)
- IPX6 rated waterproof front panel
- 3 Zone speaker control
- App Control via Bluetooth with compatible smart devices
- ASTM B117 and ASTM D4329 Compliant
- 480 Watts MOSFET (60 Watts x 8)
- 7 Selectable EQ curves (pop, jazz, classic, rock, beat, flat & user)
- Works with MWR17 (see page 14)



Bluetooth Made for iPod iPhone REAR USB INPUT IPX6 WATERPROOF WEATHER BAND TUNER APP AVAILABLE WORKS WITH SWC & MWR17

MECHLESS
NEW

MGH37BT

Digital Media Receiver with 3" LCD and Bluetooth

This gauge hole-size receiver features a large 3" TFT, multi-line, full-color LCD. The built-in Bluetooth supports audio streaming and player control profiles. The NOAA 7-band weather radio helps you stay ahead of storms while the receiver is IPX6 waterproof to withstand heavy splashing and rain. The rear USB input provides direct control for iPod and iPhone devices. One pair of RCA aux inputs and preamp outputs are also located on the back of the receiver. The zero current draw memory backup saves the boat's battery when idle.



Bluetooth Made for iPod iPhone REAR USB INPUT IPX6 WATERPROOF ZERO CURRENT DRAW LOW BATTERY INDICATOR 3" FULL COLOR LCD SCREEN WEATHER BAND TUNER WORKS WITH SWC & MWR15

MECHLESS
NEW



MGH17BT

Digital Media Receiver with Bluetooth

This gauge hole-sized receiver is IPX6 waterproof to withstand heavy splashing and rain. It features built-in Bluetooth for music streaming and player control. The USB input for playback and charge, RCA aux inputs, and preamp outputs are located on the back of the receiver. The NOAA 7-band weather radio helps you stay ahead of storms. The zero current draw memory back-up saves the boat's battery when idle.

Bluetooth REAR USB INPUT IPX6 WATERPROOF ZERO CURRENT DRAW LOW BATTERY INDICATOR WEATHER BAND TUNER WORKS WITH SWC & MWR15

MODEL # / FEATURE	Opening	Power	LCD	Built-In Bluetooth ¹	Direct USB Control for iPod & iPhone	USB Input	Aux-In	NOAA Weatherband Tuner	Preamp Outputs	Waterproof Rating	Remote Control	SWI Input for MWR15 & MRF40	Rearview Camera Input	ASTM B117 ASTM D4329 Compliant
MMC36BT		480W (60 x 8)	3" (320x240) Multi-Line	✓	✓	Control Box (2.1A)	Rear (RCA)	✓	3	IPX6	Smart App	MWR17	✓	✓
MGH37BT	3"	240W (60 x 4)	3" (320x240) Multi-Line	✓	✓	Rear (1A)	Rear (RCA)	✓	1	IPX6	Smart App	✓	✓	✓
MGH17BT	3"	240W (60 x 4)	1-Line 10 Character	✓		Rear (1A)	Rear (RCA)	✓	1	IPX6	✓	✓		✓

¹ - iPhone via USB

NEW
MECHLESS



MXD337BT Digital Media Receiver with Bluetooth

This media receiver has built-in Bluetooth Wireless Technology with support for hands-free calling, audio streaming and player control profiles. The 3.5mm auxiliary and USB inputs are conveniently located on the front of the receiver.



AM505BT Digital Media Receiver with Built-in 600 Watt Amplifier and Bluetooth

This top-of-the-line digital media receiver features direct USB control for iPod and iPhone devices and is compatible with the Pandora radio app. The built-in Bluetooth supports audio streaming and player control profiles. A built-in 600 Watt digital amplifier provides powerful and rich audio reproduction. The receiver also features a built-in 7-channel NOAA weather band tuner and a large 3" full color LCD. Media playback from select Android devices is also available via USB. The IP35USB adapter included (see page 14 for details).

MECHLESS



MCD237BT CD Receiver with Bluetooth

This versatile CD receiver feature Bluetooth Wireless Technology for easy to use hands-free calling, music streaming and player control profiles. The large 10-character LCD is easy to read even under direct light.

NEW

MODEL # / FEATURE	DIN Size	LCD Display	Mechless	Wattage	Bluetooth ¹	Direct USB Control for iPod & iPhone	Pandora Control ²	USB Input	Aux-In	EQ Presets	Preamp Outputs	Preamp Voltage	Weather Band Tuner	Remote Control	Rearview Camera Input	SWI Input for MWR15 & MRF40
MXD337BT	1-DIN	1-Line 7-Character	✓	200W (50 x 4)	✓			Front (1A)	Front 3.5mm	4	2	1.5V		✓		✓
AM505BT	1-DIN	3" (320x240) Multi-Line	✓	600W Peak 50W x 4 RMS Digital	AZDP/AVRCP with ID3 tag	✓	✓	Rear (1A)	Rear (RCA)	7	1 (Sub)	4V	7-Band NOAA	✓	✓	✓
MCD237BT	1-DIN	1-Line 10-Character	✓	200W (50 x 4)	✓			Front (1A)	Front 3.5mm	7	1	1.5V		✓		✓

1 - HFP - Hands-Free Profile, AZDP - Advanced Audio Distribution Profile / AVRCP - Audio/Video Remote Control Profile

2 - iPhone via USB

NEW MECHLESS

MCP1337BT Digital Media Receiver with Bluetooth and 6.5" Speakers

This media receiver has built-in Bluetooth Wireless Technology with support for hands-free calling, audio streaming and player control profiles. The 3.5mm auxiliary and USB inputs are conveniently located on the front of the receiver.



- Bluetooth
- USB INPUT
- TWO YEAR WARRANTY
- WORKS WITH SWC & MWR15
- AUX
- 3.5MM AUXILIARY

NEW MECHLESS

MCP1337BTB Digital Media Receiver with Bluetooth and 6.5" Speakers in Black



- Bluetooth
- USB INPUT
- TWO YEAR WARRANTY
- WORKS WITH SWC & MWR15
- AUX
- 3.5MM AUXILIARY

NEW MECHLESS

MCP1337BTS Digital Media Receiver with Bluetooth, 6.5" Speakers, and Splashguard



- Bluetooth
- USB INPUT
- TWO YEAR WARRANTY
- WORKS WITH SWC & MWR15
- AUX
- 3.5MM AUXILIARY

NEW

MECHLESS

MCP1374BTS

Digital Media Receiver with Bluetooth, 2 pairs of 6.5" Speakers, and Splashguard



- Bluetooth™
- USB INPUT
- CD PLAYER
- TWO YEAR WARRANTY
- WORKS WITH SWC & MWR15
- AUX
- 3.5MM AUXILIARY

NEW

CD RECEIVER

MCP1237BT

CD Receiver with Bluetooth and 6.5" Speakers

This versatile CD receiver feature Bluetooth Wireless Technology for easy to use hands-free calling, music streaming and player control profiles. The large 10-character LCD is easy to read even under direct light.



- Bluetooth™
- USB INPUT
- CD PLAYER
- TWO YEAR WARRANTY
- WORKS WITH SWC & MWR15
- AUX
- 3.5MM AUXILIARY

MODEL# / FEATURE	DIN Size	Mechless	LCD	Power	Built-In Bluetooth ¹	USB Input	Aux-In	EQ Presets	Preamp Outputs	Preamp Voltage	SWI Input for MWR15 & MRF40	Remote Control	Included Accessories
MCP1337BT	1-Din	✓	1-Line 7-Character	200W (50 x 4)	✓	Front	Front 3.5mm	4	2	1.5V	✓	✓	DMP672 MAW40
MCP1337BTB	1-Din	✓	1-Line 7-Character	200W (50 x 4)	✓	Front	Front 3.5mm	4	2	1.5V	✓	✓	DMP672B MAW40
MCP1337BTS	1-Din	✓	1-Line 7-Character	200W (50 x 4)	✓	Front	Front 3.5mm	4	2	1.5V	✓	✓	DMP672 MAW40, SG3
MCP1374BTS	1-Din	✓	1-Line 7-Character	200W (50 x 4)	✓	Front	Front 3.5mm	4	2	1.5V	✓	✓	(4) DMP672 MAW40, SG3
MCP1237BT	1-Din		1-Line 10-Character	200W (50 x 4)	✓	Front	Front 3.5mm	7	1	1.5V	✓	✓	DMP672, MAW40

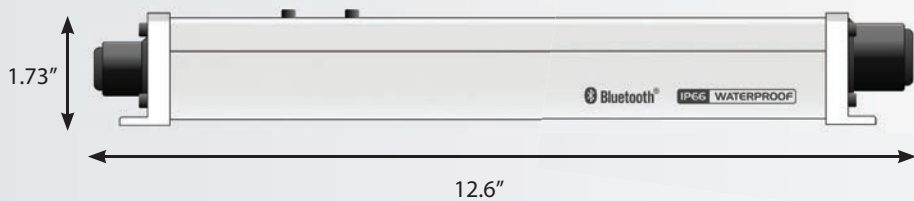
1- HFP - Hands-Free Profile, AZDP - Advanced Audio Distribution Profile / AVRCP - Audio/Video Remote Control Profile

NEW
5-CHANNEL

DMA5600 5-Channel Class D Marine Amplifier, 600 Watts Peak Power

- 50 Watts x 4 + 200 Watts x 1 RMS power @ 4-Ohms
- 75 Watts x 4 + 300 Watts x 1 RMS power @ 2-Ohms
- 150 Watts x 2 RMS power @ 4-Ohms Bridged
- Waterproof IP66
- Class-D
- 12.6" x 4.33" x 1.73" (320 mm x 110mm x 44mm) Heatsink
- 14" x 4.46" x 1.86" (356 mm 113.3mm x 47.3mm) Typical Installation

 IP66 WATERPROOF
  CLASS D TECHNOLOGY
  600 WATTS PEAK POWER



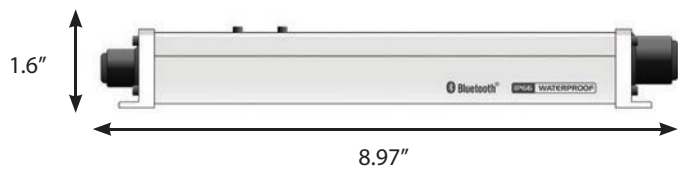
4-CHANNEL

DMA4100BT 4-Channel Class D Marine Amplifier, 1200 Watts Peak Power

- 75 Watts x 4 RMS power @ 4 Ohms
- 98 Watts x 4 RMS power @ 2 Ohms
- 140 Watts x 2 RMS power @ 4 Ohms (bridged)
- Built-in Bluetooth with A2DP audio streaming
- Waterproof (IP66 rated)
- Class-D
- RF Remote control included (MRF40)
- 1.6" H x 8.97" W x 3.1" D



 Bluetooth
  IP66 WATERPROOF
  CLASS D TECHNOLOGY
  1200 WATTS PEAK POWER

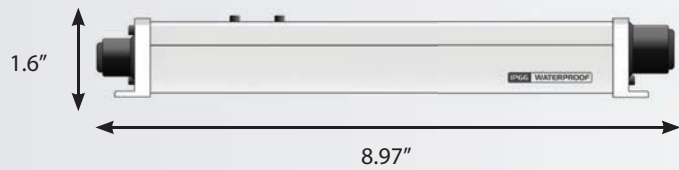


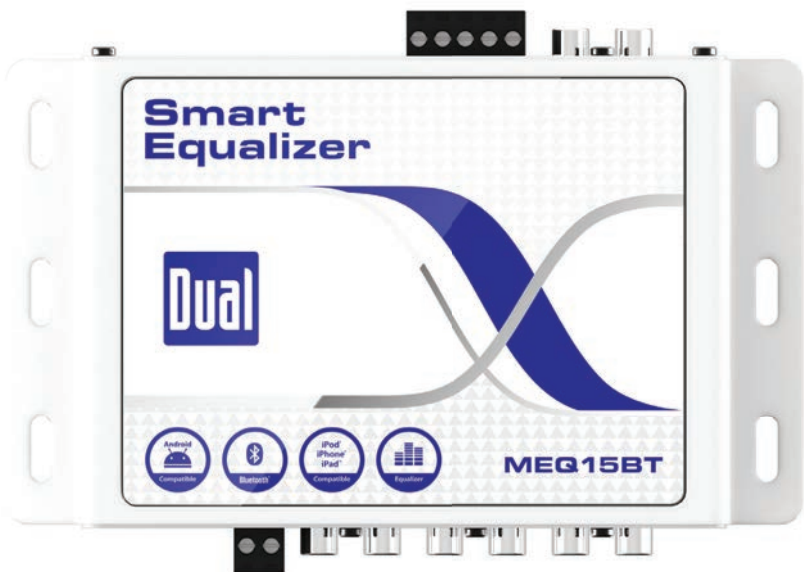
4-CHANNEL

DMA3100 4-Channel Class D Marine Amplifier, 1200 Watts Peak Power

- 75 Watts x 4 RMS power @ 4 Ohms
- 98 Watts x 4 RMS power @ 2 Ohms
- 140 Watts x 2 RMS power @ 4 Ohms (bridged)
- Waterproof (IP66 rated)
- Class-D
- 1.6" H x 8.97" W x 3.1" D

 IP66 WATERPROOF
  CLASS D TECHNOLOGY
  1200 WATTS PEAK POWER



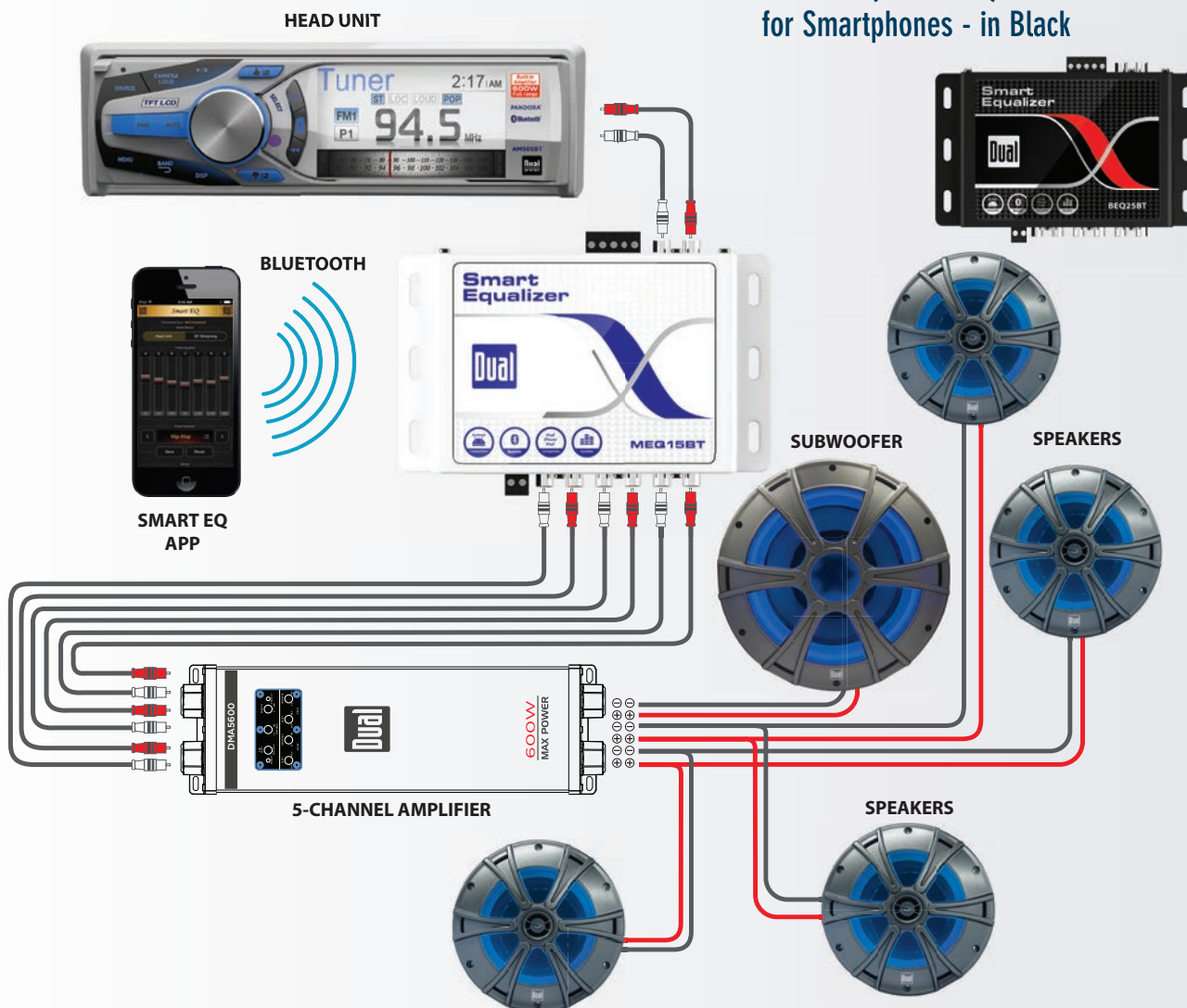


MEQ15BT
Wireless (Bluetooth) Smart EQ Processor for Smartphones

- Control balance, fader and 7 EQ presets with 20 presets from a Bluetooth connected device (Smart EQ app required, free download on iTunes and Google Play)
- Works with Apple and Android smartphones and tablets, including iPhone and iPad
- Bluetooth (A2DP) audio streaming with volume control
- 3 Pairs of RCA preamp outputs (F/R/S)
- Subwoofer gain control
- Signal sensing for auto amp remote turn-on
- High and low level inputs



TYPICAL INSTALLATION DIAGRAM



BEQ25BT
Wireless (Bluetooth) Smart EQ Processor for Smartphones - in Black

NEW 2-WAY

DMS8027

8" 2-Way Speakers with illumiNITE[®]

These vibrant marine speakers feature injection-molded polypropylene cones with rubber surrounds and UV resistant baskets to withstand harsh marine environments. Peak power is 480 Watts.

illumiNITE[®]

480

WATTS
PEAK POWER



NEW 2-WAY



DMS6516

6.5" 2-Way Speakers with illumiNITE[®]

Featuring injection-molded polypropylene cones with rubber surrounds for clear powerful music while out on the water. Peak power is 300 Watts.

illumiNITE[®]

300

WATTS
PEAK POWER

NEW 2-WAY

DMW807

8" 2-Way Wakeboard Tower Speakers

These wakeboard tower speakers are designed for rough seas. They feature marine grade cast aluminum mounting clamps and reinforced aluminum inserts for stability in the roughest water conditions. Peak power is 400 Watts.

illumiNITE[®]

400

WATTS
PEAK POWER



NEW SUB



DM1016S

10" DVC Subwoofer

This powerful subwoofer showcases two 4 ohm voice coils as well as a 76.4 oz double stacked magnet. Peak power 1500 Watts.

illumiNITE[®]

1500

WATTS
PEAK POWER

3-WAY



DMS369
6" x 9" 3-Way Speakers

These durable speakers are built with a magnetically shielded woofer and an injection-molded polypropylene cone. The poly-cloth surround is weather-resistant, guarding against water splashes. The speakers also have a UV-resistant weatherproof grille and stainless steel mounting hardware. Peak power is 200 Watts.

200 WATTS
PEAK POWER

3-WAY



DMS365
6.5" 3-Way Speakers

Featuring an injection-molded polypropylene cone and poly-cloth surround to protect against the elements. Peak power is 120 Watts.

120 WATTS
PEAK POWER

DUAL CONE



DMP672
6.5" Dual Cone Speakers

The polypropylene dual cone design provides enhanced vocal clarity. Injection-molded woofer cones let you hear your music with accurate bass response. Peak power is 100 Watts.

100 WATTS
PEAK POWER

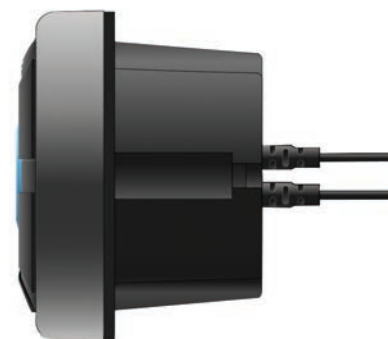
MODEL# / FEATURE	Size	Type	Power Rating (RMS/Peak)	Woofer	Tweeter	Sensitivity	Frequency Response	Mounting Depth	illumiNITE® Illumination
DM1016S	10"	Woofer	500W / 1500W	Polypropylene		86dB	36Hz - 1kHz	5.04"	✓
DMS8027	8"	2-Way	120W / 480W	Polypropylene	25mm Piezo	86dB	45Hz - 20kHz	3.53"	✓
DMS6516	6.5"	2-Way	75W / 300W	Polypropylene	25mm Piezo	86dB	60Hz - 20kHz	2.83"	✓
DMW807	8"	2-Way	100W / 400W	Polypropylene	25mm Piezo	90dB	70Hz - 20kHz		✓
DMS369	6" x 9"	3-Way	50W / 200W	Polypropylene	58mm Dome / 18mm Piezo	89dB	42Hz - 17kHz	3.44"	
DMS365	6.5"	3-Way	30W / 120W	Polypropylene	35mm Dome / 13mm Piezo	88dB	45Hz - 17kHz	2.40"	
DMP672	6.5"	Dual Cone	20W / 100W	Polypropylene		88dB	45Hz - 15kHz	2.13"	

NEW REMOTES

MWR17 Marine Wired Remote Control for MMC36BT

MWR15 Marine Wired Remote

- Controls volume, track up/down, mode, tune up/down, band and mute
- Illuminated buttons
- IPX6 Waterproof
- UV and Salt resistant
- Wired connection for reliability
- Compatible with all Dual Marine headunits with a SWC input (MWR15 only)
- Compact design for easy installation



NEW CABLES

DMMC25EXT 25 ft Extension Cable for MWR17 Remote Control



DMXC20 20 ft 3.5 mm Extension Cable for MWR15 Remote Control



DMMCYCBL Y-Cable for MWR17 Remote Control



DMXY Y-Cable for MWR15 Remote Control



ACCESSORIES

IP35USB RCA & USB to 3.5 mm & USB Adapter

- Allows the 3.5mm aux and USB inputs to be mounted on the boat's console for easy access
- Ideal for Dual gauge hole receivers and other receivers with rear auxiliary inputs
- Watertight cover
- Standard cigarette lighter size: 1 11/16" diameter, and 5.9" cable for easy installation
- Corrosion resistant gold plated connectors



MAW40 Soft Wire Antenna

- 40" Corrosion resistant cable
- Simple installation - no mounting required easy installation

MH200 Universal Gimbal Housing

This watertight, fully-enclosed, gimbal housing accommodates most single DIN receivers. The transparent fold-down door with rubber seal and positive locking mechanism guards the receiver against water splashes and the sun's harsh UV rays.



SG3/SG5 Universal Splashguard (White/Black)

This watertight splashguard features a recessed design to fit most single DIN receivers. The fold-down door with rubber seal, and high-temp, UV-resistant ABS construction help protect the receiver from the elements. Can be mounted hinge up or down.

SG3
White

SG5
Black



MAR16W/B Universal Antenna (White/Black)

- 180o swivel base for increased mounting options
- 54" corrosion resistant cable
- Durable and flexible mast
- Available in white or black

**CMX5694****6" x 9" 4-Way Speakers**

- 400 Watts peak power
- 50 Watts RMS
- 58mm Mylar® dome midrange
- Dual 18mm Piezo tweeters
- Frequency response 60Hz - 20kHz
- Sensitivity: 89dB
- 3.54" Mounting depth

**CMX5654****6 1/2" 4-Way Speakers**

- 300 Watts peak power
- 40 Watts RMS
- 35mm Mylar® dome midrange
- Dual 15mm Piezo tweeters
- Frequency response 70Hz - 20kHz
- Sensitivity: 88dB
- 2.36" Mounting depth

**CMX5GH****Universal Gimbal Housing**

This watertight, fully-enclosed, gimbal housing accommodates most single DIN receivers. The transparent fold-down door with rubber seal and positive locking door mechanism guards the receiver against water splashes and the sun's harsh UV rays, preventing corrosion and UV damage. Features a one piece, adjustable mounting bracket for easy installation.

**CMX5SG****Universal Splashguard**

This watertight splashguard features a recessed design to accommodate most 1.0 DIN head units. The transparent fold-down door with rubber seal, and high-temp, UV-resistant ABS polymer construction help protect the receiver from the damaging effects of the elements. Can be mounted hinge up or down.

**CMX5ANT****Universal Antenna**

- 180° swivel base for increased mounting options
- 54" corrosion resistant cable
- Durable and flexible mast

